

## iWoofers™ Optimization Guide

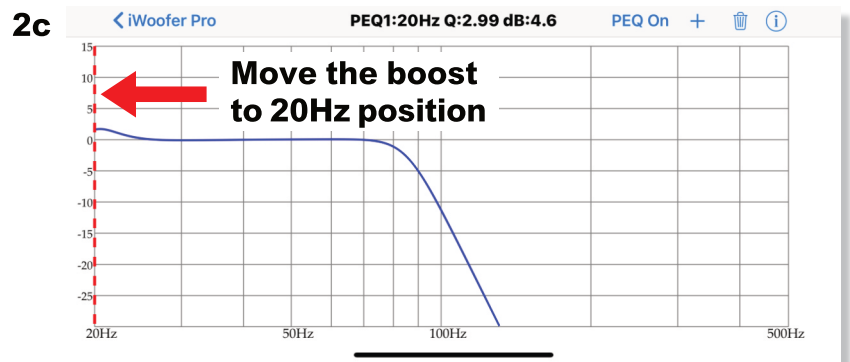
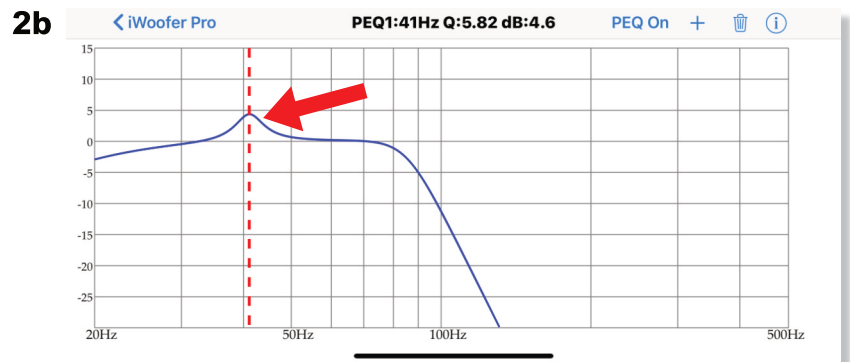
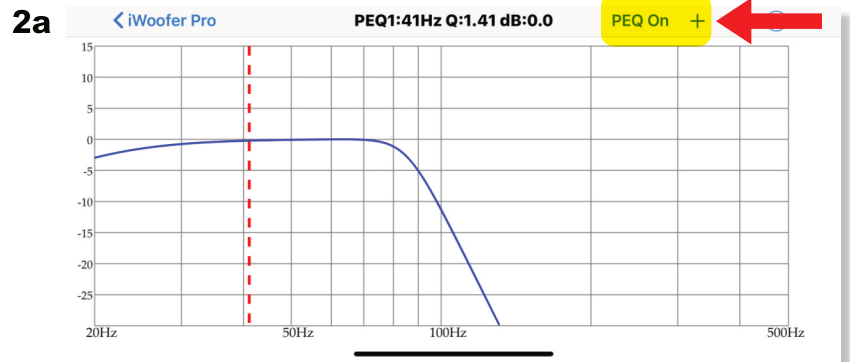
This document is designed to show you how to optimize the iWoofers™ app to Earthquake Sound's line of MiniMe DSP home theater subwoofers and amplifiers. As you are well aware, Earthquake sound subwoofers use the patented Symmetrically Loaded Audio Passive System or SLAPS technology that allows Earthquake to tune the enclosure below audible i.e. 20Hz. Note that the default

high pass filter setting of iWoofers™ is set 25Hz. While this is a good setting for other brands of woofers (to protect them from failures) Earthquake subwoofers operate well below 25Hz. Changing the settings shown below in this guide allows the iWoofers™ app to go down to 16Hz which is a must if you want to tailor the iWoofers™ app to a Earthquake sound MiniMe DSP subwoofer.

**1.** After pairing to the subwoofer, using iWoofers (free) or iWoofers™ Pro (\$5) go to Xover setting (before doing Room correction)



**2.** Insert an EQ boost as seen below. Tap the PEQ On button to create a band shown as a dotted red line. Double tap or press and hold a band for more than 1 second to select it. Once the band is selected you can slide it left or right to change frequency and up or down to control the gain. Use two fingers in a zoom in or zoom out fashion to change the Q factor. Slide the band over to the left in the 20Hz position.



**3.** Select Room Correction and then settings within room correction. You will be enabling and disable a few of these settings.

Step 3a: Enable **Auto Level** and set it to -13dB

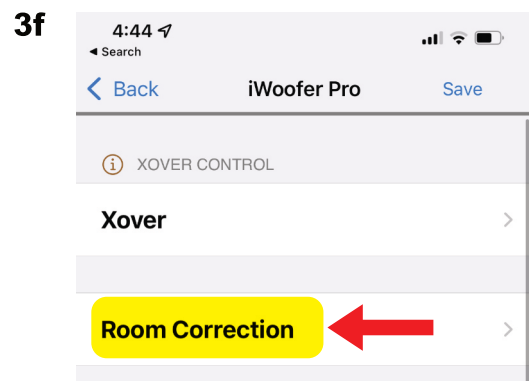
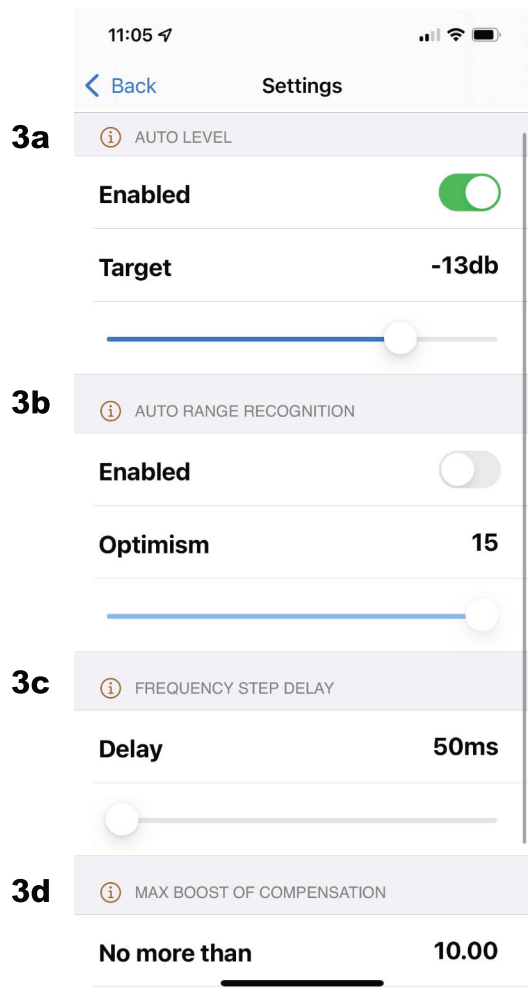
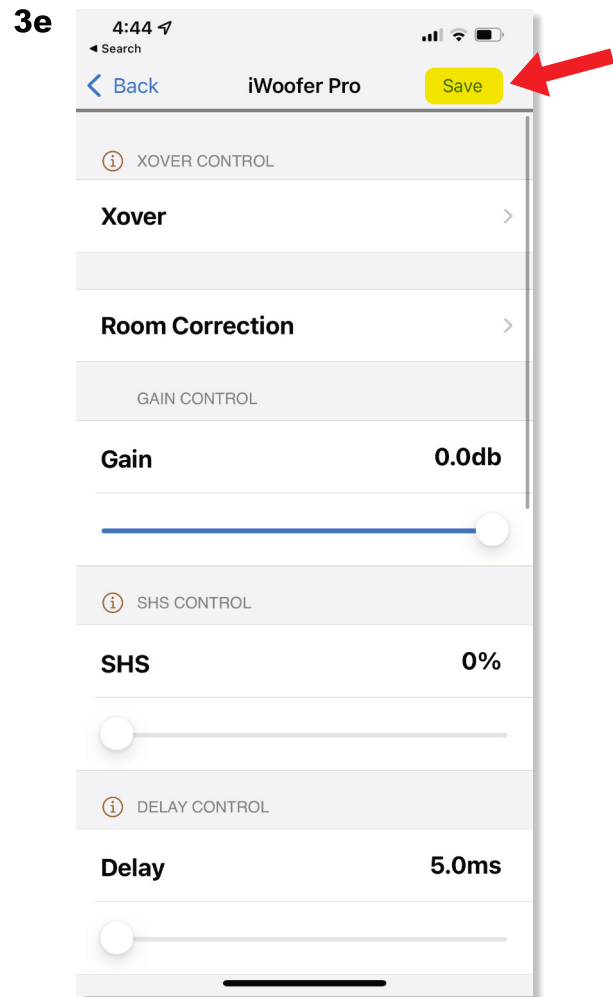
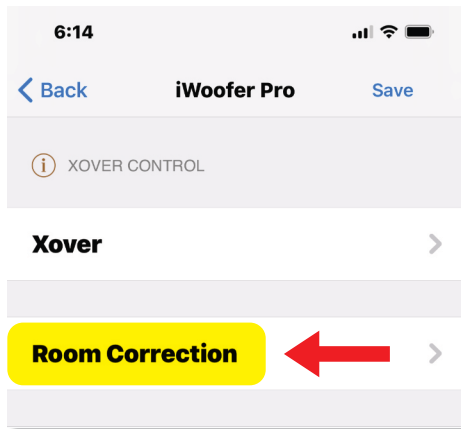
Step 3b: Disable **Auto Range Recognition**

Step 3c: Change **Delay** to 50ms for smaller rooms. If your room is larger then you may need to raise it higher than 50ms.

Step 3d: Set **Max Boost of Compensation** to 10.00.

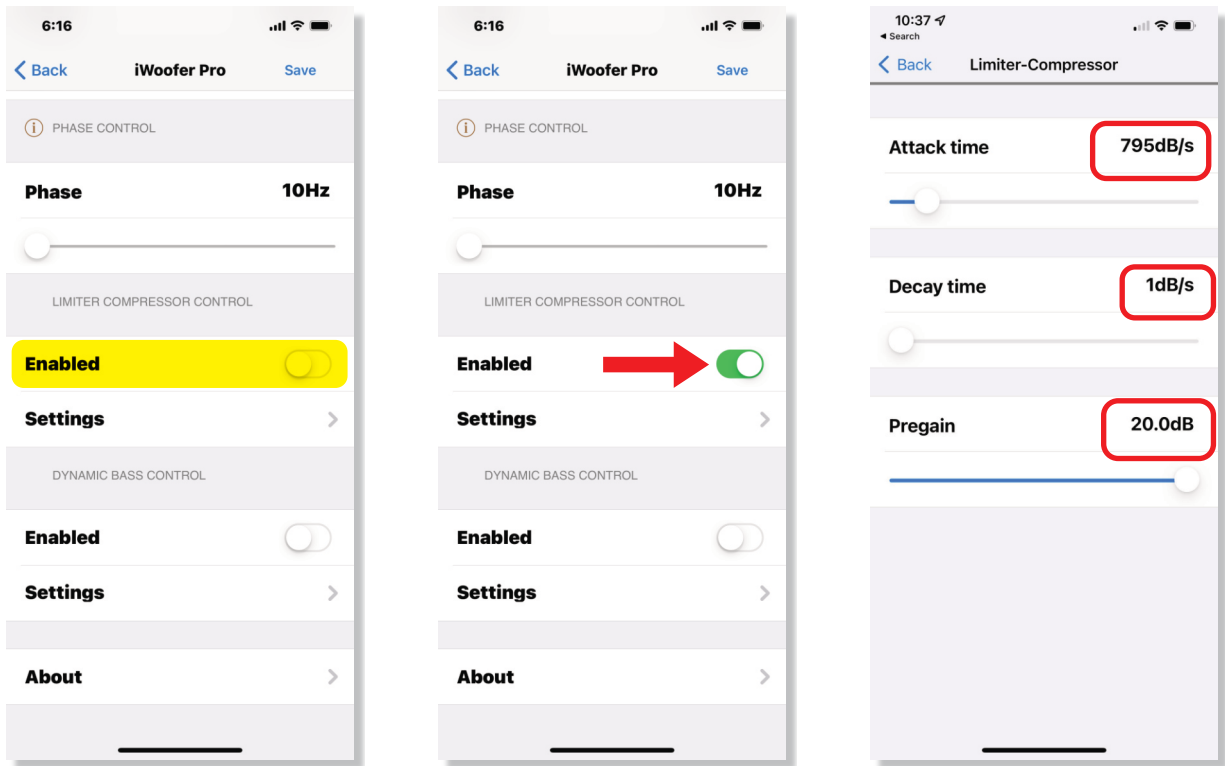
Step 3e: Navigate back to main menu and select **Save**.

Step 3f: You can now navigate to the **Room Correction Wizard** and start it.



**The following settings must be performed after the room correction wizard. These settings must be disabled during room correction.**

**4.** Scroll down to Limiter Compression Control and activate it. Then go to settings and match what is shown in red in the image to the right.



**5.** Navigate to Options and then HW Controllers and make sure that the HP filter is off and the LP filter is on as shown below. Finish by syncing your file to the MiniMe DSP subwoofer and also save the file to your mobile device. Your MiniMe DSP subwoofer is now optimized.

