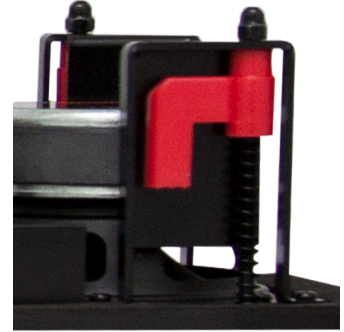


EWSLA63

Product Release

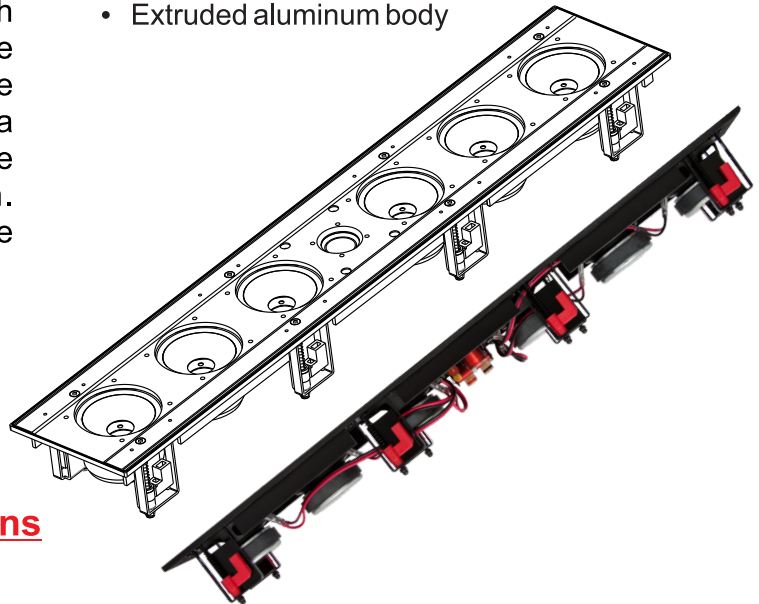


High Fidelity Line Array Speakers

The new EWSLA63 (line array in-wall system) benefits from 57 years of acoustic discoveries dating back to 1957. Line array system is a directive way of sending sound wave from the speaker to the listener with minimum wall reflection. You listen to the music, not the room. In a typical room, the EWSLA63 requires 4 times less power than a single source speaker to achieve the same sound pressure level at a listening position. As the power is reduced, so are the reflections.

Features:

- Six 3" low mass poly cone midbass
- 1" (25mm) silk dome NEO swiveling tweeters
- Easy Turn-N-Lock™ installation mechanism
- Frameless design for reduced visibility
- Gold plated, spring loaded terminals
- Elaborate crossover networks
- Magnetically attached, paintable grilles
- Extruded aluminum body



Designed For Use In:
Home Theaters
Hallways, Bathrooms & Atriums
New Construction & Retrofit Applications

EWSLA63 | **MSRP**
\$525.00/piece

	EWSLA63
(H & W)	26 1/2" (673mm) x 4 7/8" (121mm)
(C) Cut Out Dimensions	25 3/4" (654mm) x 4" (102mm)
(M) Mounting Depth	2 7/8" (73mm)