

Mini D Stereo Amplifiers

INSTALLATION MANUAL

mini D1000.4



mini D3000.4



The Sound That Will Move You

Earthquake Sound reserves the right to amend the details of the specifications without notice.

© Copyright Earthquake Sound Corporation

Earthquake Sound Corporation • 2727 McCone Avenue, Hayward, CA 94545, USA

www.earthquakesound.com



The Sound That Will Move You

TABLE OF CONTENTS

Cautions and Advisories 2
 Our Thank You..... 3
 Features and Functions..... 4-5
 Wiring Preparation..... 6
 Wiring Configurations..... 6-7
 Specifications..... 8-9
 One (1) Year Warranty Guidelines..... 10-11

CAUTION: Earthquake amplifiers are capable of generating high sound pressure levels. You should exercise caution when operating these amplifier systems. Long term exposures to high levels of sound pressure will cause permanent damage to your hearing. Sound pressure levels exceeding 85dB can be dangerous with constant exposure. Set your audio system to a comfortable loudness level. Earthquake Sound Corporation does not assume liability for damages resulting from the direct use of Earthquake amplifiers or other Earthquake products and urges users to play their music at moderate listening levels.

SOUND LEVEL dBA	DURATION PER DAY (HOURS)	
90	8	THIS CHART SHOWS THE U.S. GOVERNMENT'S OCCUPATIONAL SAFETY AND HEALTH ADMINISTRATION (OSHA) REGULATIONS WHICH WERE IN EFFECT AT THE TIME OF THIS PUBLICATION FOR PERMISSIBLE NOISE EXPOSURE, PER 29CFR1910.95, TABLE G-16
92	6	
95	4	
97	3	
100	2	
102	1 - 1 1/2	
105	1	
110	1/2	
115	1/4 OR LESS	

Mini D Stereo Amplifier
 One (1) Year Limited Warranty Guidelines (Valid in US Mainland Only)

A warranty claim will not be valid if the warranty registration card is not properly filled & returned to Earthquake with a copy of the sales receipt.

(E) Service Request:

To receive product(s) service, contact Earthquake Sound's service department at (510) 732-1000 and request an RMA number (Return Material Authorization), item(s) shipped without a valid RMA number will be refused. Make sure you provide us with your complete and correct shipping address, a valid phone number, and a brief description of the problem you are experiencing with the product. In most cases, our technicians might be able to resolve the problem over the phone, thus eliminating the need to ship the product.

(F) Shipping Instructions:

Product(s) must be properly packaged to minimize transport damage and avoid repackaging charges. Shipper claims regarding item(s) damaged in transit must be presented to the carrier. Earthquake Sound Corporation reserves the right to refuse improperly packed product(s). A copy of original sales receipt must accompany product(s) returned for service. We encourage you to include a written description of the problem inside the package. Ship product to:

Earthquake Sound Corp.
 2727 Mc Cone Avenue
 Hayward, CA 94545
 Tel: (510) 732-1000

You are responsible for the cost of shipping the product to Earthquake Sound Corporation.

(G) Disputes Resolution:

All disputes - between clients and Earthquake Sound Corporation - resulting from the one (1) year limited warranty policy must be resolved according to the laws & regulations of the county of Alameda, California.

We strongly suggest keeping a copy of your sales receipt and note the model and serial numbers of your amplifier here for future reference.

Model No. **mini D** _ _ _ _ . _

Serial No. _ _ _ _ **SERIAL NUMBER** _ _ _ _

Date of Purchase. **M M / D D / Y Y Y Y**

Mini D Stereo Amplifier

One (1) Year Limited Warranty Guidelines (Valid in US Mainland Only)

Earthquake warrants the original purchaser that all Factory Sealed New Audio Products be free from defects in material and workmanship, under normal and proper use, for a period of **one (1) year from the date of purchase** (as shown on the original sales receipt with serial number affixed/written on it).

The one (1) year warranty period is valid **only if the product is properly installed by an Earthquake authorized party**, and the warranty registration card is properly filled out and sent to Earthquake Sound Corporation.

If the product is installed by a non-authorized party, a thirty (30) day limited warranty period applies.

(A) One (1) year limited warranty plan coverage guidelines:

Earthquake pays for labor, parts, and ground freight (only in US mainland, not including Alaska and Hawaii) back to customer.

(B) Warning:

- Products (sent for repair) that are tested by Earthquake technicians and deemed to have no problem, will not be covered by the limited warranty. Customer will be charged a minimum of one (1) hour of labor (ongoing rates) plus shipping charges back to customer.
- If products were received with improper protective packaging, customer will be charged product repackaging in addition to labor, parts and shipping charges.

(C) Earthquake agrees to repair or replace - at our option - all such defective products/parts subject to the following provisions:

- Defective products/parts have not been altered or repaired by other than an Earthquake factory approved technician.
- Products/parts are not subjected to negligence, misuse, improper use, or accident, damaged by improper line voltage, used with incompatible products, or have its serial number or any part of it altered, defaced, removed, or have been used in any way that is contrary to Earthquake's written instructions.

(D) Warranty Limitations:

Earthquake warranty does not cover products that have been modified and/or abused, including but not limited to the following:

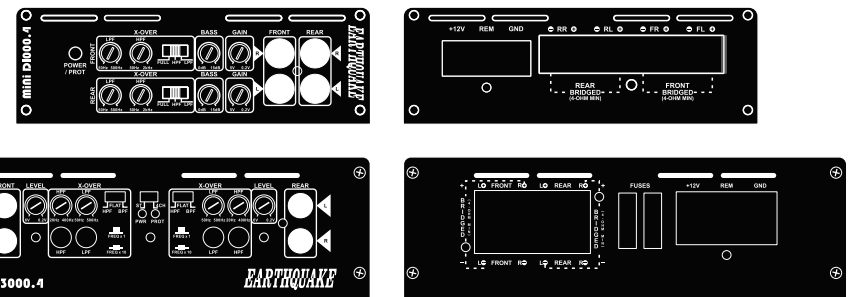
- Fading, deterioration of speaker components & finish due to improper exposure to elements.
- Bent amplifier casing, damaged finish on the casing due to abuse, misuse, or improper use of cleaning material.
- Burnt tracers on PCB.
- Product/part damaged due to poor packaging or abusive shipping conditions.
- Subsequent damage to other products.

THANK YOU

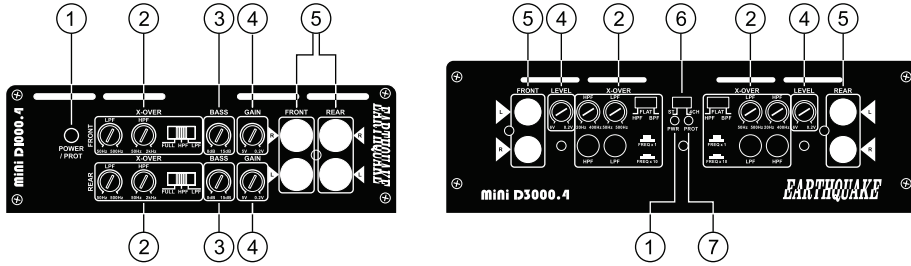
Thank you for choosing Earthquake Sound's **Mini D Stereo** amplifiers, the best way to enhance your factory mobile audio system. With proper installation and responsible listening, your amplifier(s) will give you years of near perfect sound reproduction.

We strongly recommend you to have your new amplifier(s) installed by an authorized Earthquake Sound dealer. Installation professionals employed by your dealer have the correct tools and knowledge to install your amplifier(s) neatly and successfully. Also, when your new products are installed by an authorized dealer, your products will include a ONE (1) YEAR LIMITED WARRANTY. If you choose to perform your own installation, your warranty will be subject to further limitations. Dealer policies on handling warranty requests may vary from one dealer to the next.

Please read the warranty information (located at the end of this booklet) in its entirety and use good judgement when making these vital decisions.

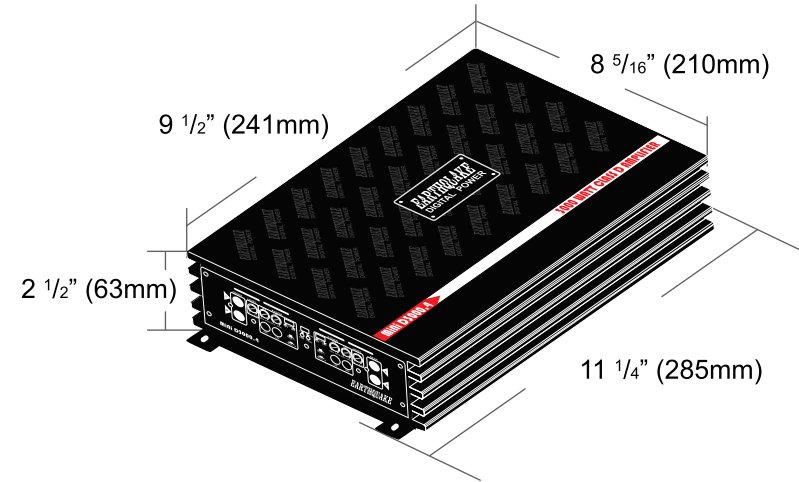


Mini D Stereo Amps FUNCTIONS AND FEATURES



- ① **POWER LED:** When lit up green, the amplifier is functioning properly.
- ② **X-OVER FREQUENCY ADJUSTMENTS & SWITCHES:** Used to adjust the boosted center frequencies.
- ③ **BASS BOOST:** Available only on the **D1000.4**, used to add 0 - 15dB to the chosen center frequency.
- ④ **GAIN / LEVEL CONTROL:** Used to adjust the low level input voltage. It ranges from **0.2V to 5V RMS** for the **D1000.4** and **0.2V to 6V RMS** for the **D3000.4**. It should be set to match the head unit's output voltage.
- ⑤ **RCA INPUTS:** Low level input of the **D1000.4** is **0.2V to 5V RMS** while the level of the **D3000.4** is **0.2V to 6V RMS**. Be sure to use a HIGH LOW LEVEL adapter if the head unit has only speaker output.
- ⑥ **STEREO/4CH INPUT SWITCH:** Available only on the **D3000.4**, set to "ST" if using 2-channel input and set to "4CH" if using 4-channel input.
- ⑦ **PROTECTION LED:** When lit up red upon powering on, the amplifier may be in self-test or protection mode. If this LED stays on red, shut down the amplifier and locate what may have triggered the amplifier to protection mode. If problem persists, call or e-mail our technical support team for further assistance.

Mini D3000.4 Amp SPECIFICATIONS



For more technical support, please contact:

E-mail: tech@earthquakesound.com
 US Toll Free: 1-800-576-7944
 Tel: 510-732-1000
 Fax: 510-732-1095

© Earthquake Sound Corporation. All rights reserved.

This document should not be construed as a commitment on the part of Earthquake Sound Corporation.

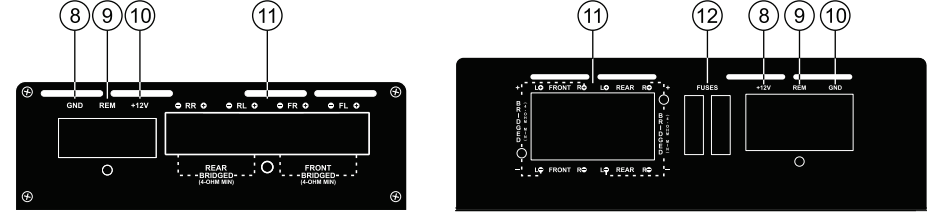
The information is subject to change without notice.

Earthquake Sound Corporation assumes no responsibility for errors that may appear within this document.

Mini D3000.4 Amp SPECIFICATIONS

	Mini D3000.4
Amplifier Class	D
Number of Channels	4
Max Power Output	3000 Watts
Power Handling @ 4-Ohm	4 x 120 WRMS
Power Handling @ 2-Ohm	4 x 200 WRMS
Power Handling - Bridged @ 4-Ohm	2 x 300 WRMS
THD+N	< 1%
Channel Separation	> 90 dB
Crossover Frequencies	20 - 500 Hz
Signal-to-Noise Ratio	98 dB
Fuse Rating	2 x 40A (included)
ALL OUTPUT POWER MEASUREMENTS ARE MADE WITH DUMMY LOAD FOR THE RMS MEASUREMENTS. DUMMY LOADS ARE HARDER TO DRIVE THAN SPEAKERS AND DEMAND MORE POWER SUPPLY CURRENT.	

Mini D Stereo Amps FUNCTIONS AND FEATURES



- ⑧ **+12V BATTERY TERMINAL:** Connect to battery positive (+) using a 4 gauge cable.
- ⑨ **REMOTE TERMINAL:** Connect remote cable to the head unit's remote terminal. If multiple amplifiers are installed in the same system, additional relays may be necessary.
- ⑩ **GROUND TERMINAL:** Connect to vehicle's chassis/ground using a short 4 gauge cable (2 feet maximum in length).
- ⑪ **SPEAKER CONNECTION:** Bridgeable speaker outputs. Note that the minimum impedance in bridged mode is **4-Ohm**.
- ⑫ **FUSES:** Available only on the **D3000.4**, these 2 x 40A fuses are used as an added protection from damaging excessive current. The **D1000.4** requires the provided 60A external fuse. Be sure to use the proper fuse rating in your installation.

NOTE: Be sure to follow the wiring preparations/guidelines as listed on the next page to ensure proper installation.

WARNING: Make sure the amplifier is completely off and not connected to any power source during the wiring process. Failure to do so may result in a short that will damage the amplifier and/or injuries.

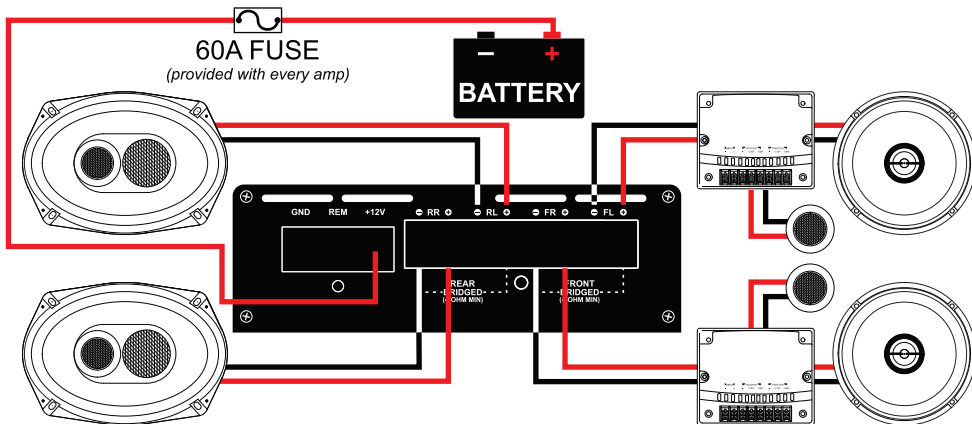
mini D1000.4 Amp WIRING PREPARATIONS

- ☑ Test the alternator output. Factory alternators will produce 60 - 80 amperes at best. Wear and heat will reduce the output by 40%.
- ☑ Alternator ground (-) must be reinforced. Use a 4-gauge cable instead of the factory 8-gauge.
- ☑ Alternator positive (+) to battery (+) must be reinforced. Use 4-gauge cables.
- ☑ Check your battery condition as batteries degrades after a while.
- ☑ Battery (+) must be connected using a 4-gauge cable to one end of the provided 60A mini ANL fuse block.
- ☑ Amplifier (+) must be connected to the other end of the provided 60A mini ANL fuse block using a 4-gauge cable.
- ☑ Ground amplifier to vehicle's chassis (bare metal) using 4-gauge cable, keep the cable short (2 feet max).
- ☑ Use 1 Farad capacitor to compensate for surges in demand.
- ☑ We recommend the use of one (1) auxiliary battery.

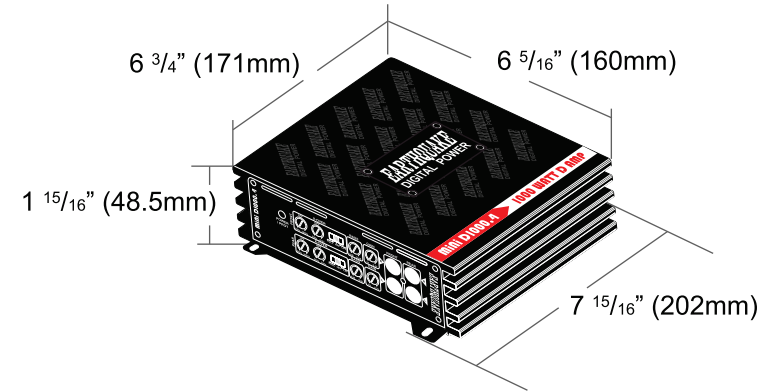
WARNING: Make sure the amplifier is completely off and not connected to any power source during the wiring process. Failure to do so may result in a short that will damage the amplifier and/or injuries.

mini D1000.4 Amp WIRING CONFIGURATIONS

FRONT STEREO & REAR FILL



mini D1000.4 Amp SPECIFICATIONS



For more technical support, please contact:

E-mail: tech@earthquakesound.com
US Toll Free: 1-800-576-7944
Tel: 510-732-1000
Fax: 510-732-1095

© Earthquake Sound Corporation. All rights reserved.

This document should not be construed as a commitment on the part of Earthquake Sound Corporation.

The information is subject to change without notice.

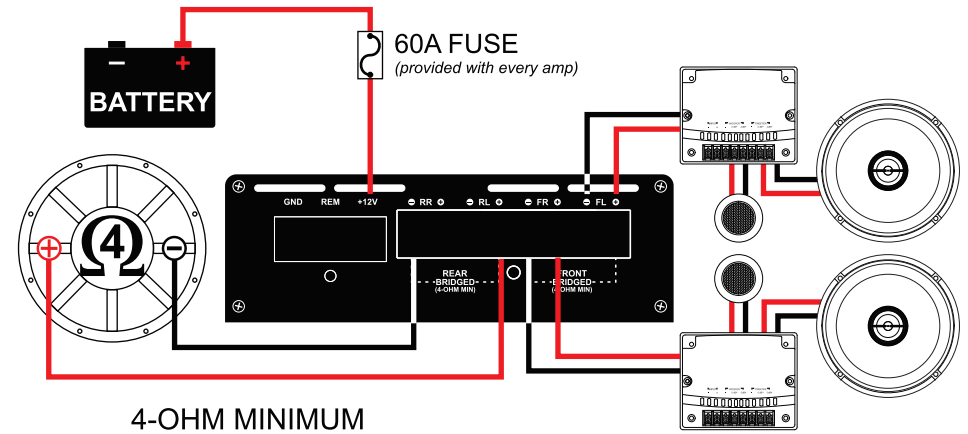
Earthquake Sound Corporation assumes no responsibility for errors that may appear within this document.

mini D1000.4 Amp SPECIFICATIONS

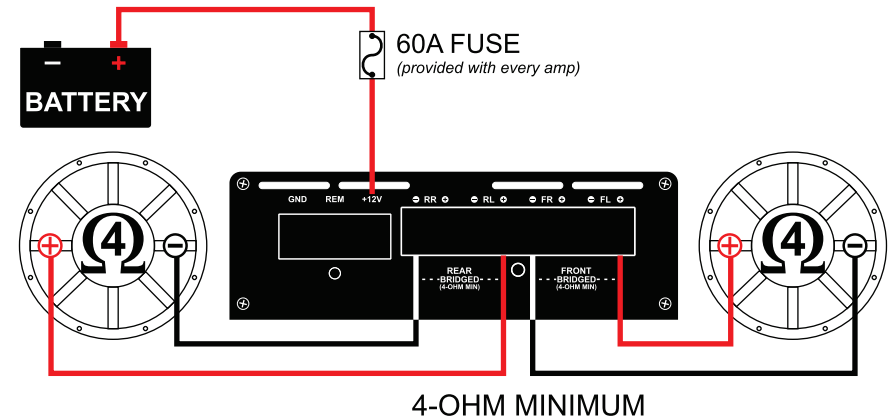
	mini D1000.4
Amplifier Class	D
Number of Channels	4
Max Power Output	1000 Watts
Power Handling @ 4-Ohm	4 x 85 WRMS
Power Handling @ 2-Ohm	4 x 120 WRMS
Power Handling - Bridged @ 4-Ohm	2 x 200 WRMS
THD+N	< 1%
Bass Boost	0 - 15 dB
Frequency Response	20 - 20kHz
Signal-to-Noise Ratio	100 dB
Fuse Rating	60A (included)
ALL OUTPUT POWER MEASUREMENTS ARE MADE WITH DUMMY LOAD FOR THE RMS MEASUREMENTS. DUMMY LOADS ARE HARDER TO DRIVE THAN SPEAKERS AND DEMAND MORE POWER SUPPLY CURRENT.	

mini D1000.4 Amp WIRING CONFIGURATIONS

2.1 SYSTEM APPLICATION



BASS APPLICATION (BRIDGED 4-OHM MINIMUM)



WARNING: Make sure the amplifier is completely off and not connected to any power source during the wiring process. Failure to do so may result in a short that will damage the amplifier and/or injuries.

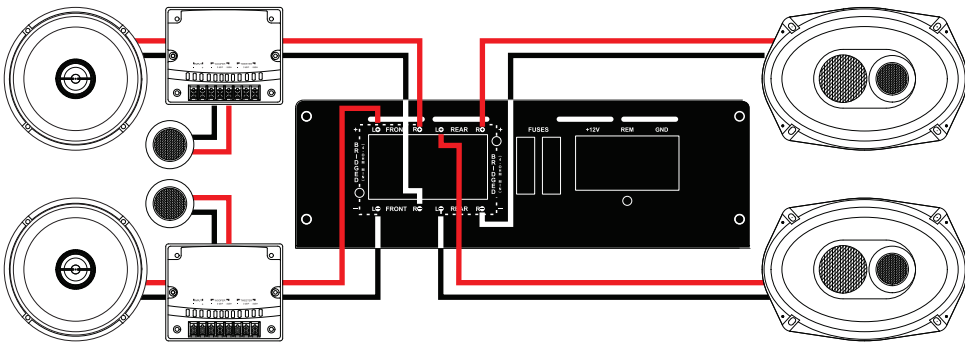
Mini D3000.4 Amp WIRING PREPARATIONS

- ☑ Test the alternator output. Factory alternators will produce 60 - 80 amperes at best. Wear and heat will reduce the output by 40%.
- ☑ Alternator ground (-) must be reinforced. Use a 4-gauge cable instead of the factory 8-gauge.
- ☑ Alternator positive (+) to battery (+) must be reinforced. Use 4-gauge cables.
- ☑ Check your battery condition as batteries degrades after a while.
- ☑ Battery (+) to amplifier (+) must be connected using a 4-gauge cable.
- ☑ Ground amplifier to vehicle's chassis (bare metal) using 4-gauge cable, keep the cable short (2 feet max).
- ☑ Use 1 Farad capacitor to compensate for surges in demand.
- ☑ We recommend the use of one (1) auxiliary battery.

WARNING: Make sure the amplifier is completely off and not connected to any power source during the wiring process. Failure to do so may result in a short that will damage the amplifier and/or injuries.

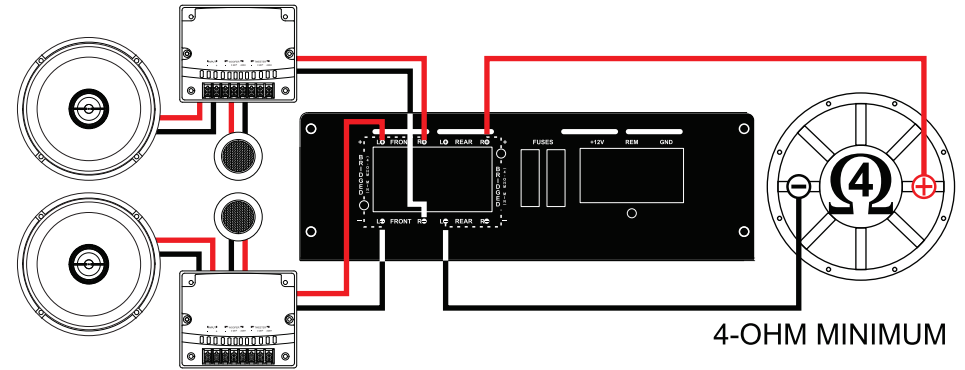
Mini D3000.4 Amp WIRING CONFIGURATIONS

FRONT STEREO & REAR FILL

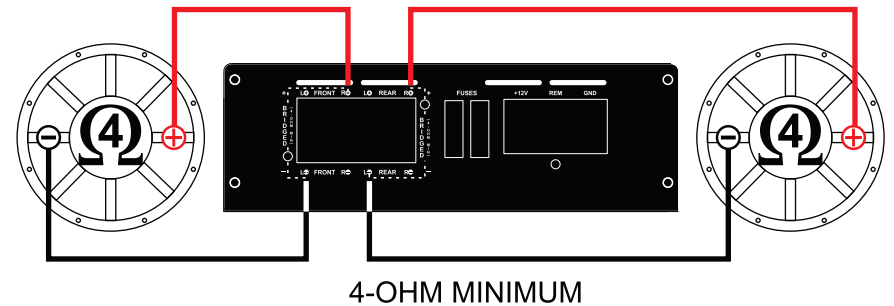


Mini D3000.4 Amp WIRING CONFIGURATIONS

2.1 SYSTEM APPLICATION



BASS APPLICATION (BRIDGED 4-OHM MINIMUM)



WARNING: Make sure the amplifier is completely off and not connected to any power source during the wiring process. Failure to do so may result in a short that will damage the amplifier and/or injuries.